

HIGHLIGHTS

- Integrated VMware vCenter plug-in for a single point of management
- Instantaneous and VM consistent snapshots
- Offloads data protection tasks from virtual servers, improving VM performance
- Create space efficient writable VM clones using BlueArc JetClone software
- Simplified management and protection allows broader deployment of VMs
- 256TB file system delivers greater scalability and increases deployment flexibility
- Policy-based snapshots reduce administrative burden
- Easily protect data against disasters with highly efficient replication to DR site

BlueArc JetCenter™ 1.2 for vSphere

Simplify Data Management and Protection with vCenter-Integrated Management Software

Server virtualization, already a mainstream IT technology, continues to thrive in today’s dynamic data centers. VMware is the leading business virtualization infrastructure provider, offering a trusted and reliable platform for building cloud infrastructures.

As server virtualization scales through the organization, there are new demands on storage ecosystems and data protection processes to handle increased workloads. Storage architectures that provide a shared pool of storage designed to scale to meet the needs of dynamic IT environments provide the flexibility and efficiency required by today’s storage ecosystems. Even with these new storage architectures, data protection tasks (e.g., backup & restore) remain a high concern for today’s IT administrators.

BlueArc provides VMware-integrated enterprise class NFS storage solutions designed to simplify your storage infrastructure without the need to compromise on performance. BlueArc tiered storage solution creates a pool of shared storage supporting multiple applications to provide the scalability required by today’s data centers. JetCenter for vSphere reduces the complexity of data protection by providing seamless integration between BlueArc storage and vSphere, simplifying data management and protection through a single point of management.

BlueArc JetCenter for vSphere

BlueArc JetCenter for vSphere delivers simple and efficient data protection for virtual environments. Combined with BlueArc’s highly efficient snapshot technology, and deployed as a plug-in to a VMware vCenter console, JetCenter software provides a single point of control for BlueArc snapshots, whether used for backup and recovery, or for creating space efficient, writable clones of virtual machines. By simplifying storage and data management tasks, and providing an integrated suite of data protection tools, BlueArc enables customers to deploy server virtualization more broadly and realize the full potential of the benefits of a virtualized data center.

Fast, Optimized VM Cloning with BlueArc JetClone

A powerful feature of VMware is the ability to quickly create new, complete servers with the click of a button. Server provisioning tasks that used to be measured in days can now be completed in minutes by creating virtual machines from master virtual server templates. BlueArc



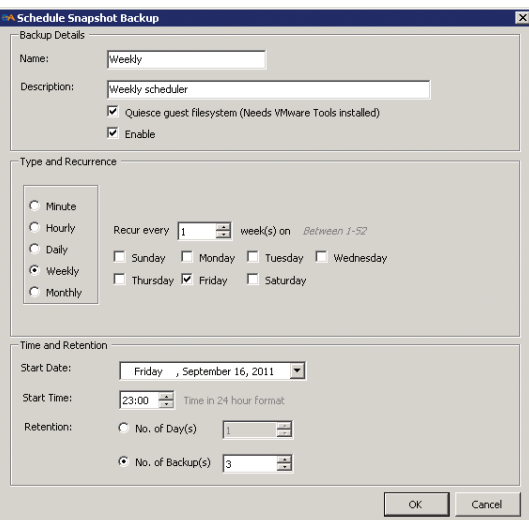
JetClone improves on this feature by creating file level, writable clones of VMDK images in just seconds, without duplicating the entire VMDK and consuming valuable storage space.

Managed from the JetCenter console within vCenter, JetClone quickly and easily provisions new VMs from existing NFS file system capacity. JetCenter moves the creation and management of clones to the BlueArc server, ensuring that the vSphere server's computing power is fully dedicated to the application. JetClone provides the administrator with instantaneous clones of a VM or vApp without consuming additional storage space. When JetClone is combined with the snapshot backup process, administrator's can restore a VM copy in under 30 seconds.

Policy-Based Snapshots for Protecting Virtual Machines

Snapshots are a fast and efficient way to create point-in-time images of files, volumes or file systems. By offloading snapshot creation to the BlueArc server, snapshots can be completed in seconds without disrupting critical business processes.

JetCenter's integration into vSphere provides an intuitive user interface for administrators to create data protection schedules that meets their needs.



As an integrated plug-in to vSphere, JetCenter allows vSphere administrators to work from their existing management interface to create snapshots for backup or recovery of virtual machines and VMDK files associated with the BlueArc storage system. JetCenter quiesces the system before the snapshot is taken to guarantee a consistent, usable snapshot backup.

Easy-to-use wizard to define policy-based snapshots and define retention.

JetCenter provides the administrator with a choice of:

- Instant, on-demand snapshots taken by the user
- Scheduled snapshot backups based on policy-based settings defined within JetCenter
- Orphan snapshots that exist on BlueArc storage systems and associated with VMs that are deleted.

Auto-generating snapshots in real time consumes a lot of storage space. JetCenter's back-up retention policies lets the administrators define the retention policy by snapshot freeing up storage capacity. The backup retention policy can be applied to on-demand snapshots and when creating a policy or editing a snapshot schedule.

Retention policies can be defined by:

- the number of backups, e.g., retain the last 10 backups
- the number of days, e.g., retain the last 3 days
- a mixture of number of backups and days

Simplify Without Compromise

BlueArc provides the ideal solution to manage, protect and recover your virtual environment. BlueArc JetCenter for vSphere integrates high performance BlueArc servers with a complete storage software suite including JetClone and JetMirror, delivering maximum simplicity for your virtual environment, without compromising performance, reliability and scalability.

FEATURES	
Intuitive	Integrated into the VMware vCenter console
Scalable	256TB file system for nearly unlimited cloning
Dashboard	Easily see vital information at a glance
Groups	Allows virtual machines to be grouped according to your criteria
vApps	Easily snapshot all VMs associated with an application
Streamlined	Manages coordination of snapshots between storage and VMs
Automated	Set schedules and define policies for "set and forget" operation
Non-disruptive	Back-up and recover without impacting performance
Searchable	Quickly find specific snapshots and VMs
Reports	Includes reporting, logging, and events

SYSTEM REQUIREMENTS	
BlueArc Software	BlueArc SiliconFS 8.0 or later
Network Protocol	NFSv3, NFSv4
VMware Applications	VMware vCenter Server and Client

OPTIONAL LICENSED FEATURES	
BlueArc JetClone	Required to create BlueArc managed writable clones
BlueArc JetMirror	Enables fast replication and disaster recovery for virtual environments

JetCenter version 1.2 is compatible with:

- All BlueArc servers running BOS 8.0, or higher.
- VMware vSphere Client version 4.X and 5.0.
- Windows XP Professional and Server 2003, or higher.



BlueArc Corporation
 Corporate Headquarters
 50 Rio Robles
 San Jose, CA 95134
 t 408 576 6600
 f 408 576 6601
 www.bluearc.com

BlueArc UK Ltd.
 European Headquarters
 Queensgate House
 Cookham Road
 Bracknell RG12 1RB, United Kingdom
 t +44 (0) 1344 408 200
 f +44 (0) 1344 408 202

